

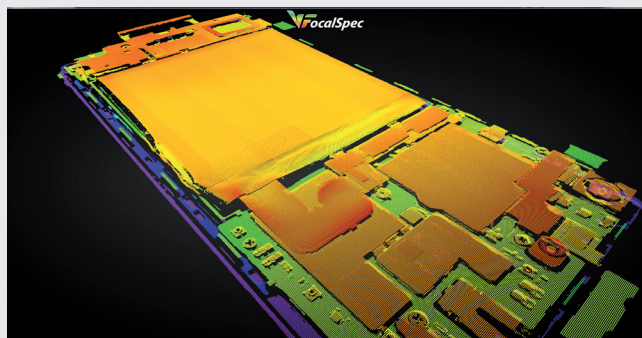
# SUBMICRON ACCURACY IN ON-LINE MEASUREMENTS



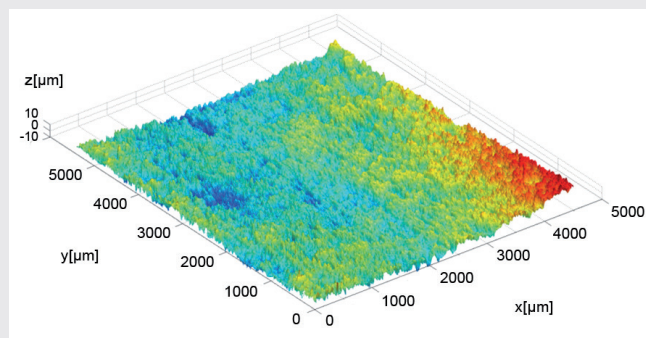
## FEATURES

- Non-contact optical measurement
  - 3D topography
  - Tomography of transparent materials
  - Film thickness
- Measurement speed up to 1 000 000 3D-points/s
- Fast quality control of surface microstructures
- Laboratory-level accuracy on production lines at production speed
- Dimensions and distance
- Surface micro profile measurements

### Applications examples



Submicron accurate 3D imaging of electronics boards.



Laboratory-accurate surface roughness measurement.

### Ask for more information:

FocalSpec Oy  
Kaitoväylä 1  
FI-90590 Oulu  
FINLAND

Tel. +358 10 231 2810  
info@focalspec.com  
Further contact details:  
www.focalspec.com

## LINE CONFOCAL SENSOR SPECIFICATIONS

LINE CONFOCAL SENSOR	LCI 400	LCI 1200	LCI 1600	MCP 100	
Optical profile length	4.50	11.26	16.43	5.50	mm
Pixel size X	2.20	5.50	8.02	4.00	µm
Pixel size Y	10	25	36	25	µm
Magnification	0.40	1.00	1.46	1.00	
Z-resolution	0.10	0.55	0.98	1.00	µm
Stand-off distance	5.50	16.16	50.00	12.0	mm
Z-range	1.00	2.80	5.50	5.50	mm
Number of points/profile	2048	2048	2048	2	
Measurement speed	500	500	440	8 000	Hz
Wavelength	VIS	VIS	VIS	IR	
Max slope of object	15.0	20.0	13.5	15.0	deg
Dimensions	258x258x79	645x214x130	431x358x113	262x127x38	mm

### SENSOR INTERFACES

Powering	24 VDC, 2A
PC connectivity	Gigabit Ethernet
Line synchronization	Three fast isolated digital inputs, 5 V

### SOFTWARE DEVELOPMENT KIT (SDK)

Application Programming Interface (API)	Dynamically/statically linked C++ library
Quick start source code examples	C++ console example C# client example with simple GUI
Operating system requirements	Windows 7, 64-bit
API Documentation	HTML (Doxygen)

Technology is word wide patented.

#### Ask for more information:

FocalSpec Oy  
Kaitoväylä 1  
FI-90590 Oulu  
FINLAND

Tel. +358 10 231 2810  
info@focalspec.com  
Further contact details:  
www.focalspec.com